



## Calibration Certification

Calibration certificates for all of Lascar's temperature and humidity data loggers are available to purchase. For custom-specific or multiple temperature points, please contact the Lascar sales team for further pricing.



EL-GFX



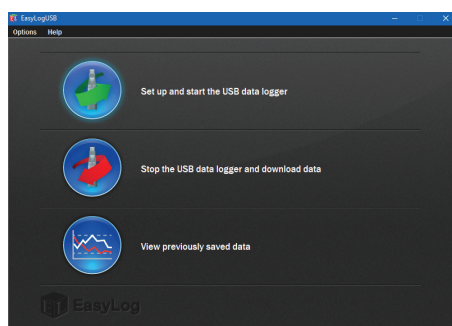
## Quick Start Guide

1

### Welcome! Let's set up your EL-GFX First Install Your Software & USB Driver

Windows™ 7, 8.1 and 10

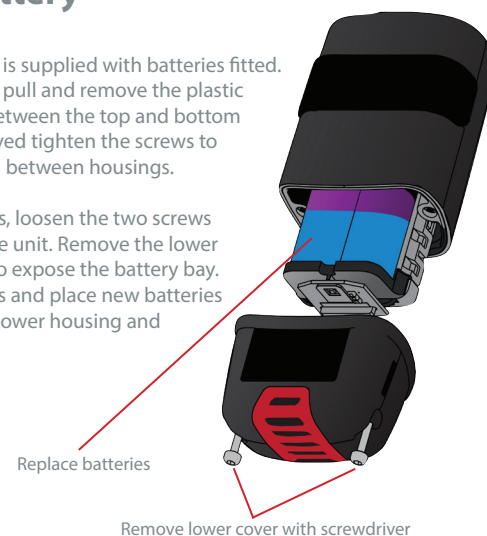
- Visit [www.lascarelectronics.com/software/easylog-usb](http://www.lascarelectronics.com/software/easylog-usb) and click "Download"



2

### Install Your Battery

- Your EL-GFX data logger is supplied with batteries fitted. To connect the batteries pull and remove the plastic tag located at the join between the top and bottom housing. With this removed tighten the screws to ensure a waterproof seal between housings.
- When replacing batteries, loosen the two screws located at the base of the unit. Remove the lower portion of the housing to expose the battery bay. Remove the old batteries and place new batteries in position. Replace the lower housing and tighten the screws.



3

### Your Data Logger Is Ready For Use

Ensure the batteries are correctly installed.

- Connect the data logger to an available USB port on your PC using the micro USB cable provided.
- Double click on the EasyLog USB icon on your Windows™ desktop. This will load the configuration software. Set-up the data logger for a new log, download a data logger that has been recording, view previously saved data in graph format and check the current status of the attached data logger (including the serial number).
- When setup is complete, the data logger should be disconnected from the USB port to begin recording. If you would like advice on how best to use the data logger for a particular application, please contact your nearest Lascar representative.
- **Do not leave your data logger connected to the USB port as this will cause some of the battery capacity to be lost.**

### Getting To Know Your EL-GFX Logger




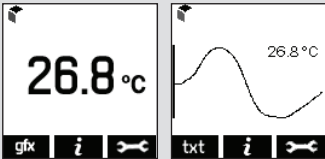




- **USB Cover:** This USB port cover gives IP66 protection\* to your data logger when fitted.
- **Mounting Clip:** The plastic mounting clip supplied allows wall mounting if required or to metal surfaces using the integrated magnet.
- **Micro USB Cable:** The micro USB cable allows connection to the PC for programming or data download. Use in conjunction with a USB wall adapter for continuous mains power.

- **2x 1/2 AA Batteries:** The unit is powered when the 2x 1/2 AA batteries are installed. Batteries are user replaceable when drained.

\* The EL-GFX-DTC, EL-GFX-DTP & GFX-D2 are not IP-rated

Model shown: EL-GFX-1. Other models may differ

## Menu Button Functions and LCD Screen Indication

<p><b>ARMED!</b> Press button to start logging</p> 	<p><b>DELAYED START</b> Starts logging at 10:30:00 04/03/12</p>	<p><b>DELAYED START</b> Starts logging when temperature above 36.2°C</p>	<p><b>START LOGGER</b></p> <ul style="list-style-type: none"> <li>Loggers can be started immediately on a button press, delayed to a specific time or delayed to specific reading</li> </ul>		<p><b>DISPLAY DATA</b></p> <ul style="list-style-type: none"> <li>Data can be displayed on screen in digital or graphical format</li> <li>You can switch between these views by pressing the <b>gfx</b> / <b>txt</b> buttons at the bottom-left of your screen</li> </ul>	
<p><b>ON-SCREEN ICONS</b></p> <div style="display: flex; justify-content: space-around;"> <div data-bbox="129 449 384 618">  <ul style="list-style-type: none"> <li>When this EasyLog cube is spinning in the top-left corner your logger is logging</li> </ul> </div> <div data-bbox="393 449 648 618">  <ul style="list-style-type: none"> <li>High/Low Alarm indicators are displayed at the top of your screen</li> </ul> </div> <div data-bbox="658 449 972 618">  <ul style="list-style-type: none"> <li>This icon indicates that your battery is low and will need to be replaced soon</li> </ul> </div> </div>			<p><b>STOP/START LOGGING &amp; MUTE ALARM</b></p> <div style="display: flex; justify-content: space-around;"> <div data-bbox="1001 429 1158 588"> <p>Stop Logging Logger Settings</p> </div> <div data-bbox="1168 429 1324 588"> <p>Start Logging Logger Settings</p> </div> <div data-bbox="1334 429 1491 588"> <p>Mute Alarm Stop Logging Logger Settings</p> </div> </div> <ul style="list-style-type: none"> <li>By pressing the <b>mute</b> button, you can stop your logger, or view logger settings. If you have already stopped logging, this option will change to 'Start Logging'. The audible alarm can be muted from this menu if enabled</li> </ul>			
<div style="display: flex;"> <div data-bbox="217 677 374 836"> <p><b>Temperature</b> Max 34.8°C Min 22.8°C Since 10:30 24/09/2012</p> </div> <div data-bbox="393 677 550 836"> <p>Mem Used 32% Readings 6336</p> </div> </div>		<p><b>SUMMARY DATA</b></p> <ul style="list-style-type: none"> <li>Summary screen displays minimum and maximum logs. Reset function clears summary if required</li> <li>These screens can be reached by pressing the <b>i</b> button</li> </ul>		<div style="display: flex;"> <div data-bbox="1089 677 1246 836"> <p>Start Logging Logger Settings</p> </div> <div data-bbox="1256 677 1413 836"> <p><b>EasyLog USB</b> Sample Rate 10s Low Alm 10°C High Alm 40°C S/N 000000001</p> </div> </div>		<p><b>LOGGER SETTINGS</b></p> <ul style="list-style-type: none"> <li>To view a summary of the logger's settings press the <b>key</b> button, then click 'Logger Settings'</li> </ul>
<div style="display: flex; align-items: center;">  <div data-bbox="658 866 972 1045"> <p><b>LOCKED MODE</b></p> <ul style="list-style-type: none"> <li>When in locked mode - an option during PC set-up - the logger can only be stopped and re-started using a PC loaded with the unit's configuration software</li> </ul> </div> </div>			<p><b>POP-UP MESSAGES</b></p> <ul style="list-style-type: none"> <li>A message will overlay the screen - if there is an issue - the next time a button is pressed, e.g. if the logger is running low on memory</li> </ul> <div style="display: flex; justify-content: space-around;"> <div data-bbox="1011 876 1168 1035"> <p>Time &amp; date not set Start unit logging using PC</p> </div> <div data-bbox="1177 876 1334 1035"> <p>Memory is 90% full Download data to a PC to clear</p> </div> <div data-bbox="1344 876 1501 1035"> <p>Memory full, logger stopped Download data to a PC to clear</p> </div> </div>			

Please note that screens may vary slightly depending on model. EL-GFX-1 screens shown.

## GFX Family Of Data Loggers

Part No	Function	Range	Accuracy (overall error)		Readings Per Channel	Battery	Battery Life
			Typ.	Max.			
EL-GFX-1	Temperature	-30 to +80°C (-22 to +176°F)	±0.1°C (±0.2°F)	±0.75°C (±1.5°F)	250,000+	2 x ½ AA	6 months
EL-GFX-2	Temperature & Humidity and Dew-point	-30 to +80°C (-22 to +176°F) 0 to 100%RH	±0.5°C (±1.0°F) ±3.0%RH	±2.0°C (±4.0°F) ±5.0%RH	250,000+	2 x ½ AA	6 months
EL-GFX-2+	Increased Accuracy Temperature, Humidity and Dew-point	-30 to +80°C (-22 to +176°F) 0 to 100%RH	±0.3°C (±0.6°F) ±2%RH	±1.5°C (±3.0°F) ±4%RH	250,000+	2 x ½ AA	6 months
EL-GFX-DTC	Dual-Channel Thermocouple (J, K and T-type)	-200 to +1350°C (-328 to +2462°F) (K-type) -200 to +1190°C (-328 to +2174°F) (J-type) -200 to +390°C (-328 to +734°F) (T-type)	±0.5°C (±0.9°F)		250,000+	2 x ½ AA	6 months
EL-GFX-DTP	Dual-channel thermistor	-40 to +125°C (-40 to +257°F)	±0.1°C (±0.2°F)		250,000+	2 x ½ AA	6 months
EL-GFX-D2	Dual-Channel Temperature, Humidity & Dew-point	-40°C to +80°C (-40°F to +176°F) 0 to 100%RH	±0.5°C (±1.0°F) ±3.0%RH	±2.0°C (±4.0°F) ±5.0%RH	250,000+	2 x ½ AA	4 months