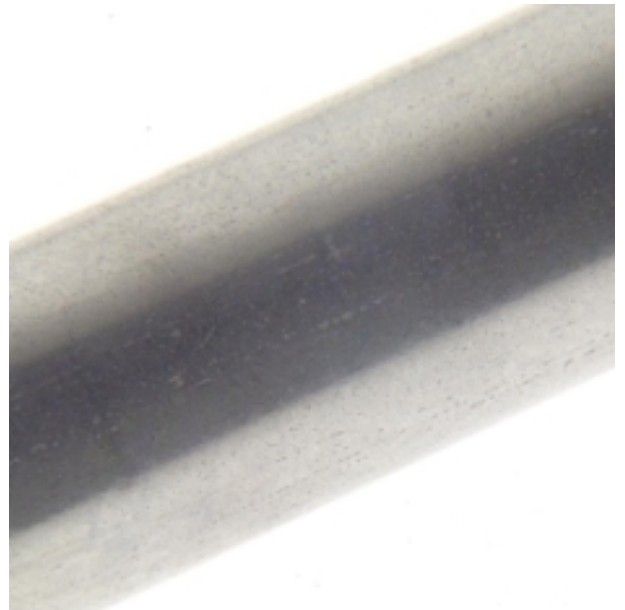


Pot Seals - Plain Stainless Steel



Labfacility are the UK's leading manufacturer of Temperature Sensors, Thermocouple Connectors and associated Temperature Instrumentation and stockings of Thermocouple Cables. The Company has been trading since 1971 and is ISO9001 accredited.

Plain stainless steel pot seals are essential for creating secure, leak-proof connections in various industrial and mechanical applications.

Their corrosion resistance, durability, and strength make them suitable for harsh environments.

Proper selection, installation, and maintenance ensure reliable performance and long-lasting durability.

Specifications

Specifications

General Description	Pot Seals to house the transition joints of sensor to extension leads
Material	Stainless steel
Thread	Plain bodied
Length	15mm to 44mm