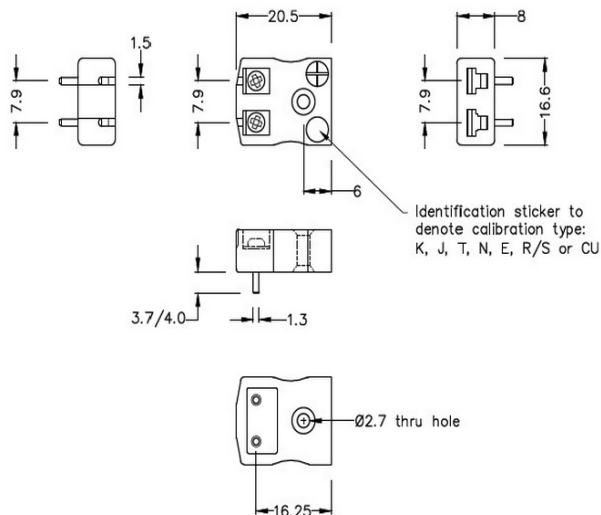
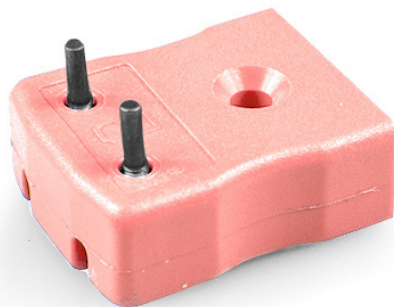


PCB Mounting Thermocouple Connector Socket IM-N-PCB Type N IEC with Tin Plated Pins



Miniature PCB Socket
(dimensions in mm)



Labfacility are the UK's leading manufacturer of Temperature Sensors, Thermocouple Connectors and associated Temperature Instrumentation and stockings of Thermocouple Cables. The Company has been trading since 1971 and is ISO9001 accredited.

PCB Mounting Thermocouple Connector Socket IM-N-PCB Type N IEC with Tin Plated Pins

These items are not available to order online so please call or email our sales team with your required quantity for price and delivery information.

Specially designed for PCBs, solid tin plated pins for direct board mounting & provision for CJC sensor

Specifications**Specifications**

Product Code	XE-1259-TIN
General Description	Versatile, high quality circuit board mounting miniature socket
Thermocouple Type	N IEC
Connector Type	PCB socket
Connector Size	Miniature
Colour	Pink
Max. Temperature	220°C
Pins	Tin Plated
+Positive Contact	Nickel / Chromium / Silicon
-Negative Contact	Nickel Silicon
Standards Met	BS EN 50212:1997. RoHS