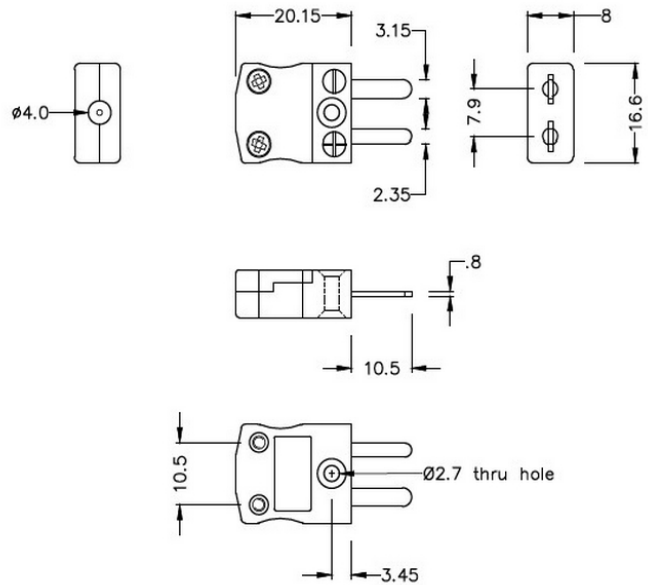
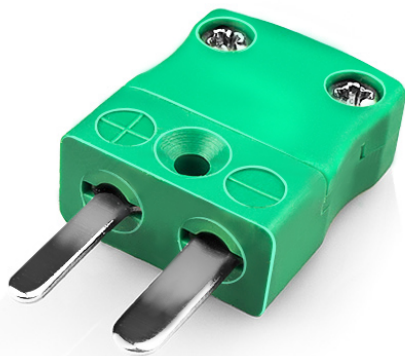


# Miniature Thermocouple Connector Plug IM-K-M Type K IEC



**Miniature in-line Plug**  
(dimensions in mm)

[Click here to view product](#)

|                            |   |
|----------------------------|---|
| <b>Product Code</b>        | XE-1100-001   |
| <b>General Description</b> | Ideal for general purpose use. Contacts are polarised to ensure correct connection. |
| <b>Thermocouple Type</b>   | K IEC   |
| <b>Connector Type</b>      | Plug  |
| <b>Connector Size</b>      | Miniature   |
| <b>Colour</b>              | Green   |
| <b>Max. Temperature</b>    | 220°C   |
| <b>Pins</b>                | Flat Pins   |
| <b>+Positive Contact</b>   | Nickel Chromium   |
| <b>-Negative Contact</b>   | Nickel Alloy  |

|               |                        |
|---------------|------------------------|
| Standards Met | BS EN 50212:1997. RoHS |
|---------------|------------------------|

