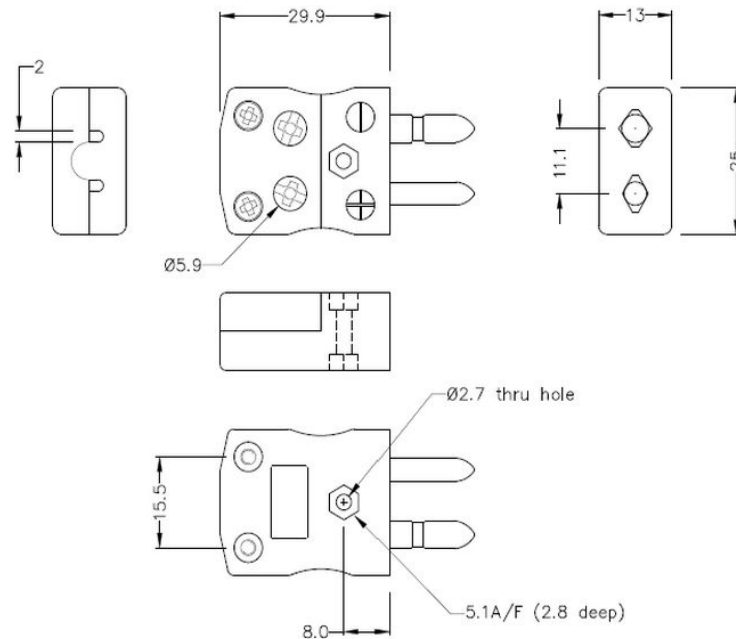
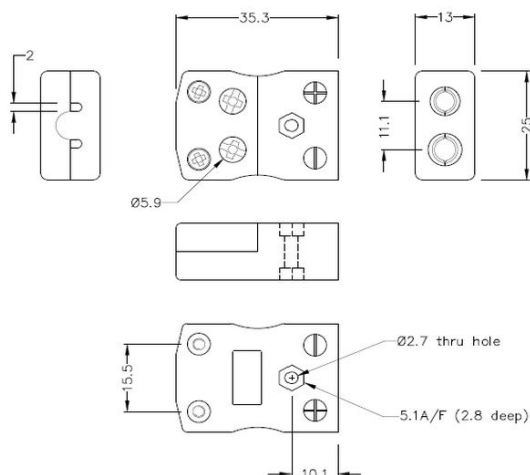


# Standard Quick Wire Thermocouple Connector Quick Wire Plug & Socket JS-CU-MQ+FQ Type CU JIS



**Standard in-line Plug - Quick Wire**  
(dimensions in mm)



**Standard in-line Socket - Quick Wire**  
(dimensions in mm)



Labfacility are the UK's leading manufacturer of Temperature Sensors, Thermocouple Connectors and associated Temperature Instrumentation and stockings of Thermocouple Cables. The Company has been trading since 1971 and is ISO9001 accredited.

**Standard Thermocouple Connector Quick Wire Plug & Socket JS-CU-MQ+FQ Type CU JIS**

Standard quick wire connector with solid round pins. Easy jab-in connection for rapid termination. Just push-in wire & tighten screw.

**Specifications****Specifications**

<b>Product Code</b>	XE-1087-001
<b>General Description</b>	Easy 'jab-in' connection for rapid termination, contacts are polarised to prevent incorrect connection
<b>Thermocouple Type</b>	CU JIS
<b>Connector Size</b>	Standard
<b>Connector Type</b>	Quick Wire Plug & Socket
<b>Colour</b>	White
<b>Max. Temperature</b>	220°C
<b>Pins</b>	Solid Round Pins
<b>+Positive Contact</b>	Copper
<b>-Negative Contact</b>	Copper
<b>Standards Met</b>	BS EN 50212:1997. RoHS