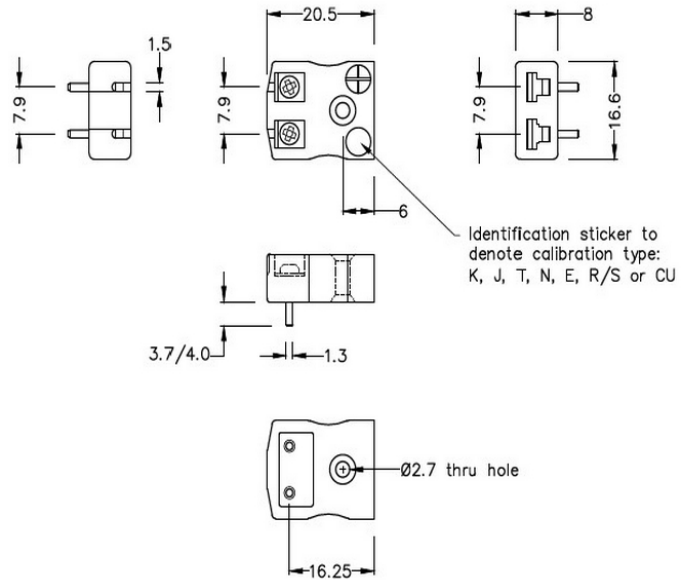


**PCB Mounting Thermocouple Connector Socket**  
**IM-R/S-PCB Type R/S IEC**



**Miniature PCB Socket**  
(dimensions in mm)

|                            |   |
|----------------------------|---|
| <b>General Description</b> | Versatile, high quality circuit board mounting miniature socket |
| <b>Thermocouple Type</b>   | R/S IEC   |
| <b>Connector Type</b>      | PCB socket  |
| <b>Connector Size</b>      | Miniature   |
| <b>Colour</b>              | Orange  |
| <b>Max. Temperature</b>    | 220°C   |
| <b>+Positive Contact</b>   | Copper  |
| <b>-Negative Contact</b>   | Copper Alloy  |
| <b>Standards Met</b>       | BS EN 50212:1997. RoHS  |

