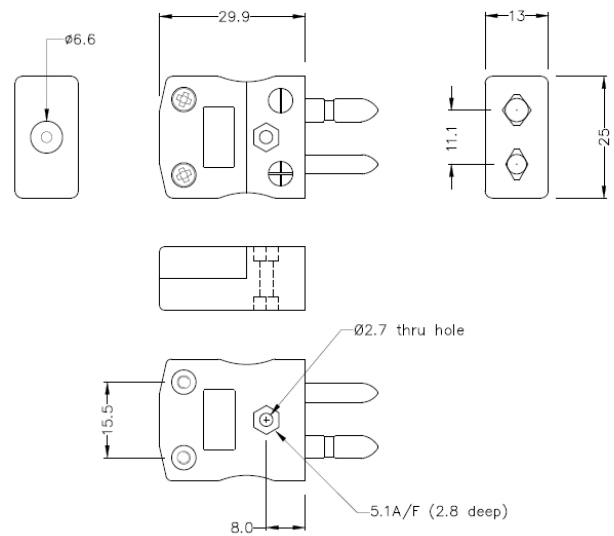
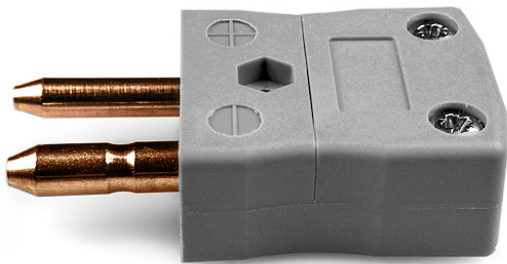


Standard Thermocouple Connector Plug IS-B-M Type B IEC



Standard in-line Plug
 (dimensions in mm)

General Description	Contacts are polarised to prevent incorrect connection
Thermocouple Type	B IEC
Connector Type	Plug
Connector Size	Standard
Colour	Grey
Max. Temperature	220°C
Pins	Solid Round Pins
+Positive Contact	Copper
-Negative Contact	Copper
Standards Met	BS EN 50212:1997. RoHS