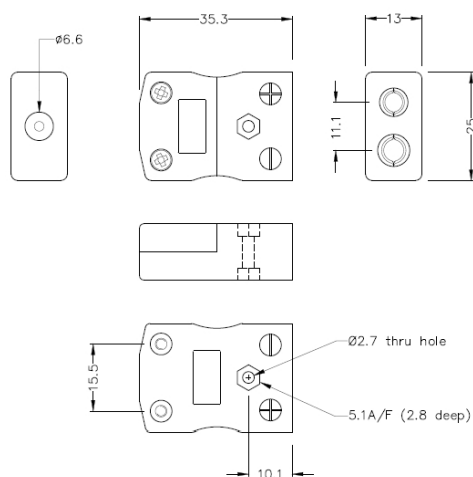
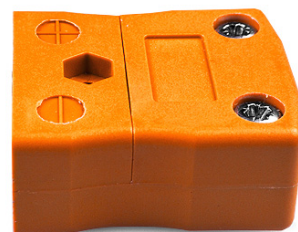


## Standard Thermocouple Connector In-Line Socket IS-R/S-F Type R/S IEC



**Standard in-line Socket**  
(dimensions in mm)



Labfacility are the UK's leading manufacturer of Temperature Sensors, Thermocouple Connectors and associated Temperature Instrumentation and stockings of Thermocouple Cables. The Company has been trading since 1971 and is ISO9001 accredited.

**Standard Thermocouple Connector In-Line Socket IS-N-F Type N IEC**

Accepts standard round plug pins, suitable for industrial applications

**Specifications****Specifications**

<b>Product Code</b>	XE-1592-001
<b>General Description</b>	Accepts standard round plug pins, contacts are polarised to prevent incorrect connection.
<b>Thermocouple Type</b>	R/S IEC
<b>Connector Type</b>	Socket
<b>Connector Size</b>	Standard
<b>Colour</b>	Orange
<b>Max. Temperature</b>	220°C
<b>+Positive Contact</b>	Copper
<b>-Negative Contact</b>	Copper Alloy
<b>Standards Met</b>	BS EN 50212:1997. RoHS
<b>Series</b>	Standard Connector