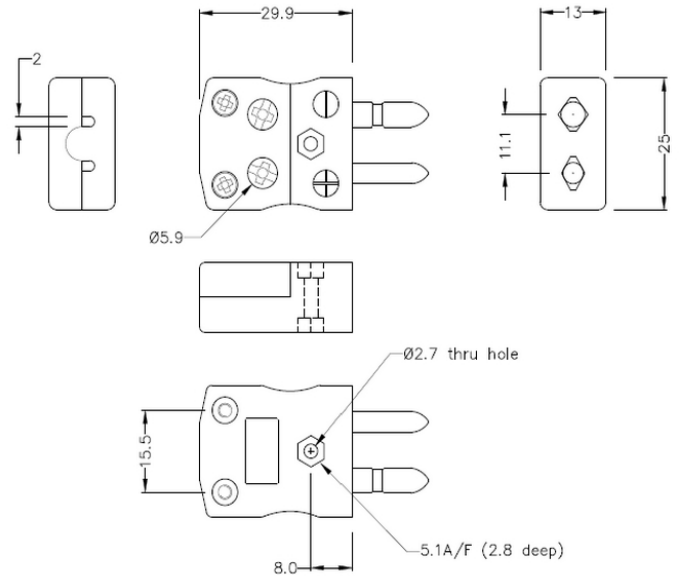
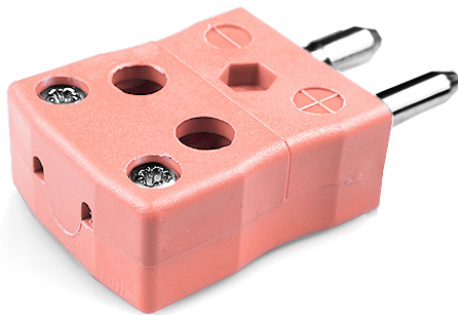


# Standard Quick Wire Thermocouple Connector Plug IS-N-MQ Type N IEC



**Standard in-line Plug - Quick Wire**  
(dimensions in mm)

**General Description** Easy 'jab-in' connection for rapid termination, contacts are polarised to prevent incorrect connection.

<b>Thermocouple Type</b>	N IEC
<b>Connector Type</b>	Quick Wire Plug
<b>Connector Size</b>	Standard
<b>Colour</b>	Pink
<b>Max. Temperature</b>	220°C
<b>Pins</b>	Solid Round Pins
<b>+Positive Contact</b>	Nickel / Chromium / Silicon
<b>-Negative Contact</b>	Nickel Silicon
<b>Standards Met</b>	BS EN 50212:1997. RoHS

