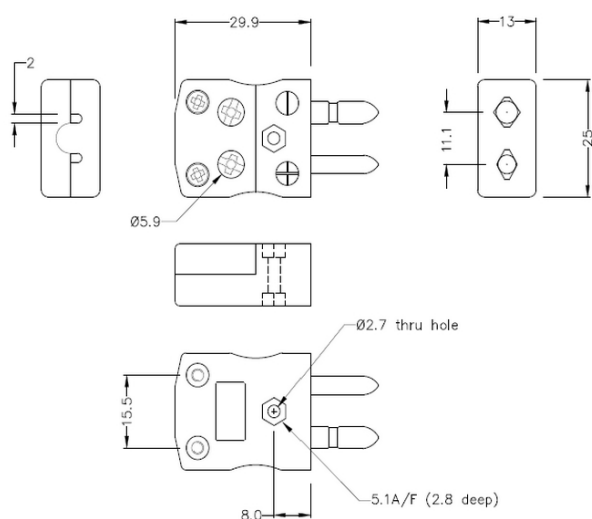
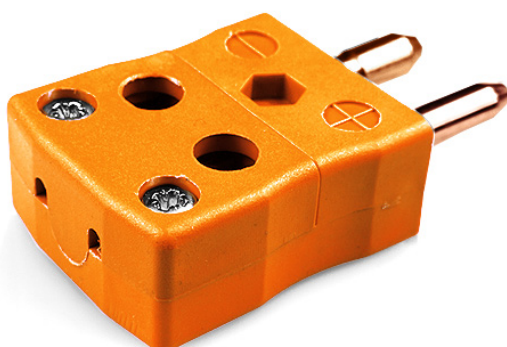
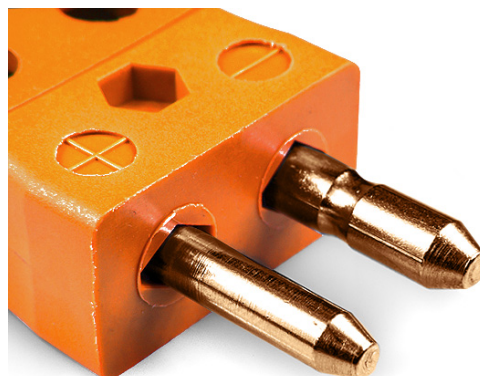


Standard Quick Wire Thermocouple Connector Plug IS-R/S-MQ Type R/S IEC



Standard in-line Plug - Quick Wire
(dimensions in mm)



Labfacility are the UK's leading manufacturer of Temperature Sensors, Thermocouple Connectors and associated Temperature Instrumentation and stockings of Thermocouple Cables. The Company has been trading since 1971 and is ISO9001 accredited.

Standard Quick Wire Thermocouple Connector Plug IS-R/S-MQ Type R/S IEC

Easy 'jab-in' connection for rapid termination, just push wire in and tighten screw. Contacts are polarised to prevent incorrect connection

Specifications**Specifications**

Product Code	XE-1601-001
General Description	Easy 'jab-in' connection for rapid termination, contacts are polarised to prevent incorrect connection.
Thermocouple Type	R/S IEC
Connector Type	Quick Wire Plug
Connector Size	Standard
Colour	Orange
Max. Temperature	220°C
Pins	Solid Round Pins
+Positive Contact	Copper
-Negative Contact	Copper Alloy
Standards Met	BS EN 50212:1997. RoHS