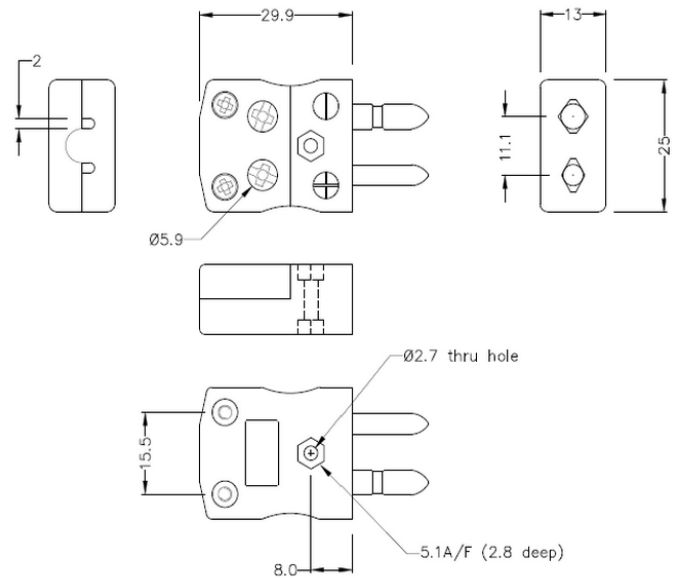
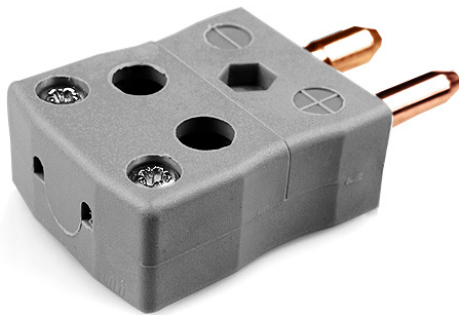


Standard Quick Wire Thermocouple Connector IS-B-MQ Plug Type B IEC



Standard in-line Plug - Quick Wire
(dimensions in mm)

[Click here to view product](#)

Product Code	XE-1661-001
General Description	Easy 'jab-in' connection for rapid termination, contacts are polarised to prevent incorrect connection.
Thermocouple Type	B IEC
Connector Type	Quick Wire Plug
Connector Size	Standard
Colour	Grey
Max. Temperature	220°C
Pins	Solid Round Pins
+Positive Contact	Copper

-Negative Contact	Copper
Standards Met	BS EN 50212:1997. RoHS

