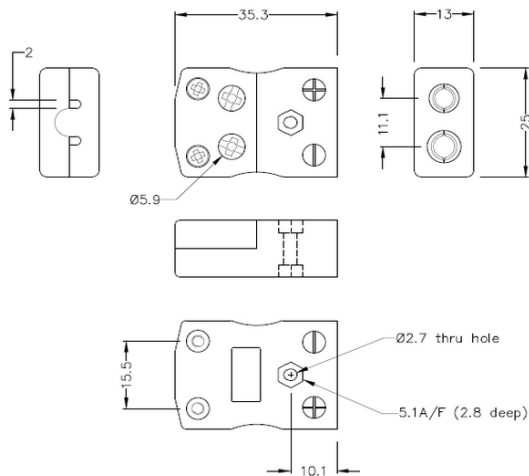


## Standard Quick Wire Thermocouple Connector Socket IS-J-FQ Type J IEC



**Standard in-line Socket - Quick Wire**  
(dimensions in mm)



Labfacility are the UK's leading manufacturer of Temperature Sensors, Thermocouple Connectors and associated Temperature Instrumentation and stockings of Thermocouple Cables. The Company has been trading since 1971 and is ISO9001 accredited.

**Standard Quick Wire Thermocouple Connector Socket IS-J-FQ Type J IEC**

Easy 'jab-in' connection for rapid termination, just push wire in and tighten screw. Contacts are polarised to prevent incorrect connection

**Specifications****Specifications**

<b>Product Code</b>	XE-1472-001
<b>General Description</b>	Easy 'jab-in' connection for rapid termination, contacts are polarised to prevent incorrect connection.
<b>Thermocouple Type</b>	J IEC
<b>Connector Type</b>	Quick Wire Socket
<b>Connector Size</b>	Standard
<b>Colour</b>	Black
<b>Max. Temperature</b>	220°C
<b>+Positive Contact</b>	Iron
<b>-Negative Contact</b>	Copper Nickel
<b>Standards Met</b>	BS EN 50212:1997. RoHS
<b>Series</b>	Standard Connector