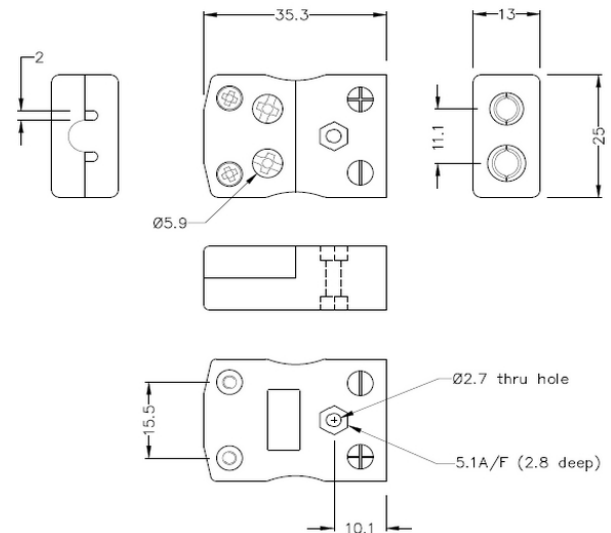


Standard Quick Wire Thermocouple Connector Socket IS-E-FQ Type E IEC



Standard in-line Socket - Quick Wire
 (dimensions in mm)

General Description Easy 'jab-in' connection for rapid termination, contacts are polarised to prevent incorrect connection.

Thermocouple Type E IEC

Connector Type Quick Wire Socket

Connector Size Standard

Colour Violet

Max. Temperature 220°C

+Positive Contact Nickel Chromium

-Negative Contact Copper Nickel

Standards Met BS EN 50212:1997. RoHS

