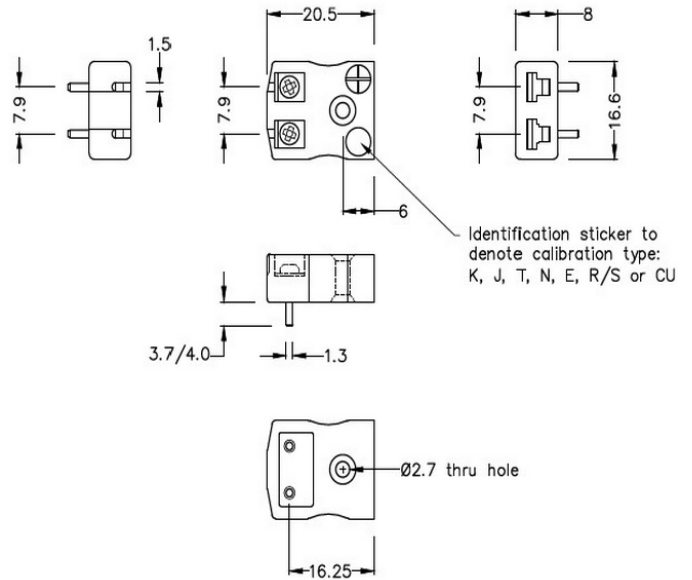


PCB Mounting Thermocouple Connector Socket AM-J-PCB Type J ANSI



Miniature PCB Socket
(dimensions in mm)

General Description	Versatile, high quality circuit board mounting miniature socket
Thermocouple Type	J ANSI
Connector Type	PCB socket
Connector Size	Miniature
Colour	Black
Max. Temperature	220°C
+Positive Contact	Iron
-Negative Contact	Copper Nickel
Standards Met	BS EN 50212:1997. RoHS