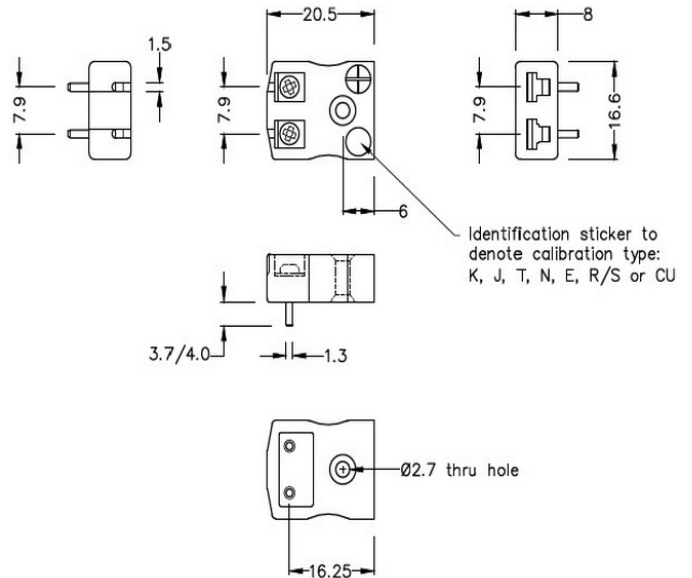
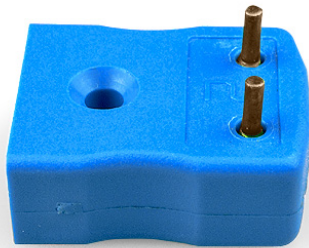


PCB Mounting Thermocouple Connector Socket AM-T-PCB Type T ANSI



Miniature PCB Socket
(dimensions in mm)

[Click here to view product](#)

| | |
|----------------------------|---|
| Product Code | XE-1229-001 |
| General Description | Versatile, high quality circuit board mounting miniature socket |
| Thermocouple Type | T ANSI |
| Connector Type | PCB socket |
| Connector Size | Miniature |
| Colour | Blue |
| Max. Temperature | 220°C |
| +Positive Contact | Copper |
| -Negative Contact | Copper Nickel |
| Standards Met | BS EN 50212:1997. RoHS |