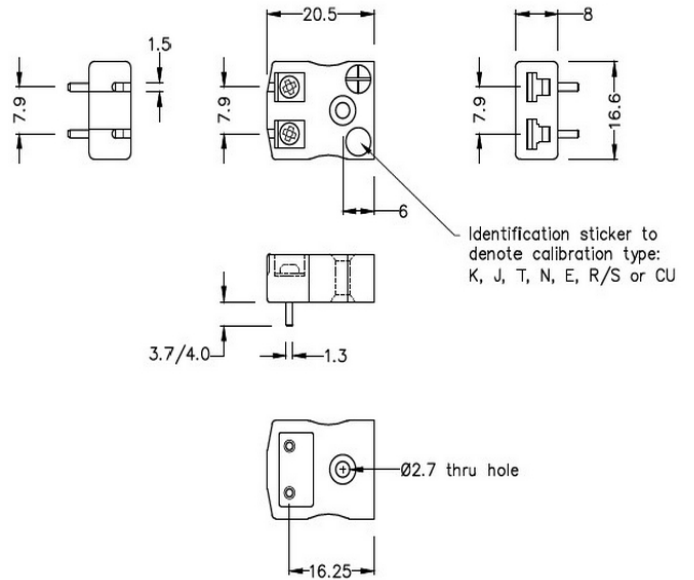
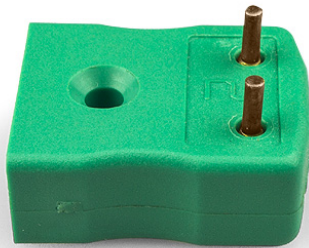


PCB Mounting Thermocouple Connector Socket AM-R/S-PCB Type R/S ANSI



Miniature PCB Socket
(dimensions in mm)

General Description Versatile, high quality circuit board mounting miniature socket

Thermocouple Type R/S ANSI

Connector Type PCB socket

Connector Size Miniature

Colour Green

Max. Temperature 220°C

+Positive Contact Copper

-Negative Contact Copper Alloy

Standards Met BS EN 50212:1997. RoHS

