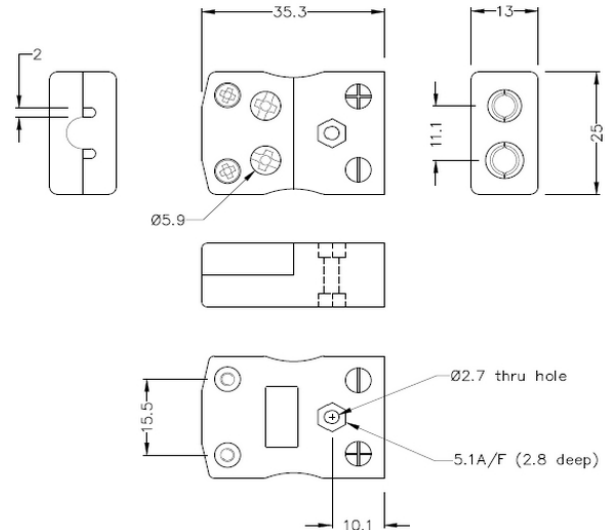
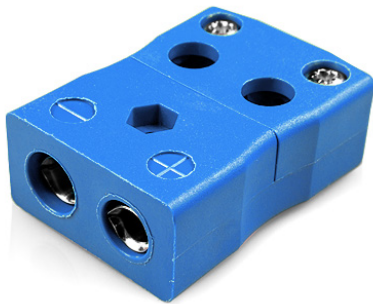


Standard Quick Wire Thermocouple Connector Socket AS-T-FQ Type T ANSI



Standard in-line Socket - Quick Wire
(dimensions in mm)

General Description Easy 'jab-in' connection for rapid termination, contacts are polarised to prevent incorrect connection.

Thermocouple Type T ANSI

Connector Type Quick Wire Socket

Connector Size Standard

Colour Blue

Max. Temperature 220°C

+Positive Contact Copper

-Negative Contact Copper Nickel

Standards Met BS EN 50212:1997. RoHS

