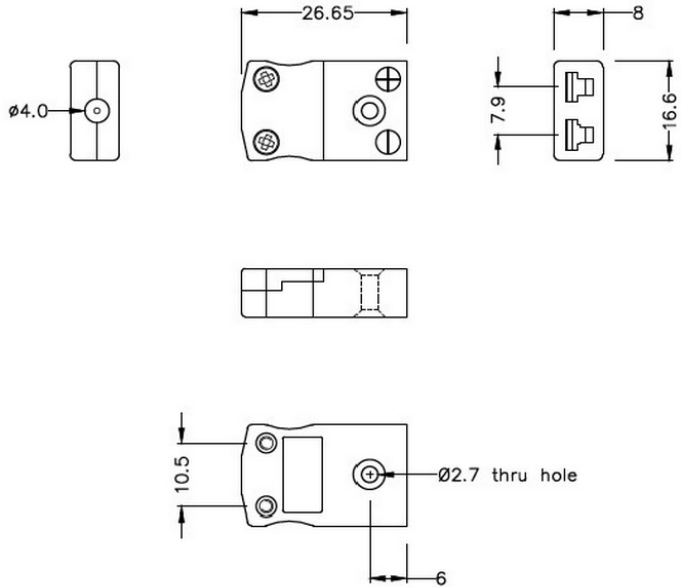


Miniature Thermocouple Connector In-Line Socket JM-E-FS Type E JIS



Miniature in-line Socket
(dimensions in mm)

[Click here to view product](#)

Product Code	XE-9232-001
General Description	Ideal for general purpose use. Contacts are polarised to ensure correct connection.
Thermocouple Type	E JIS
Connector Type	Socket
Connector Size	Miniature
Colour	Violet
Max. Temperature	220°C
+Positive Contact	Nickel Chromium
-Negative Contact	Copper Nickel
Standards Met	BS EN 50212:1997. RoHS

