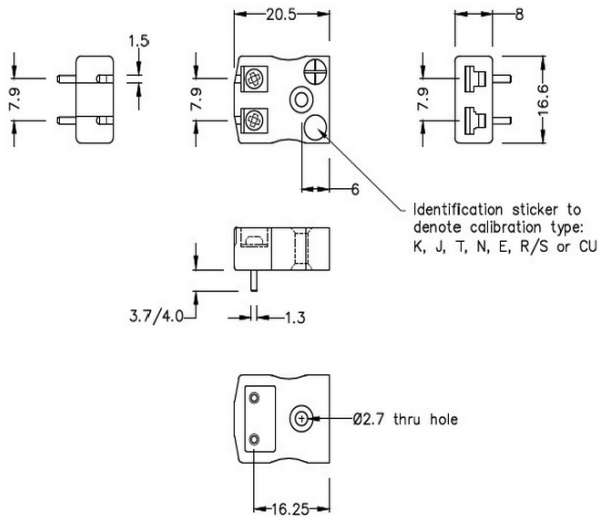
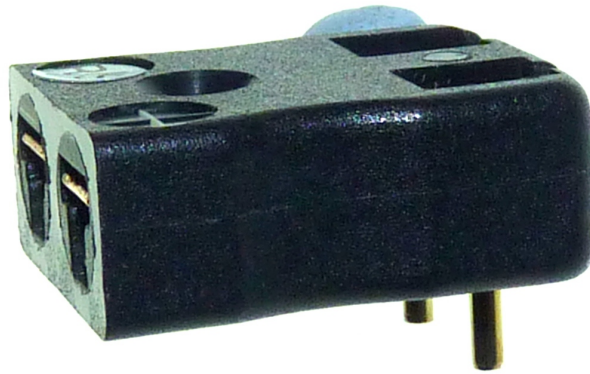


PCB Mounting Thermocouple Connector Socket JM-R/S-PCB Type R/S JIS



Miniature PCB Socket
(dimensions in mm)



Labfacility are the UK's leading manufacturer of Temperature Sensors, Thermocouple Connectors and associated Temperature Instrumentation and stockings of Thermocouple Cables. The Company has been trading since 1971 and is ISO9001 accredited.

PCB Mounting Thermocouple Connector Socket JM-R/S-PCB Type R/S JIS

Specially designed for PCBs, solid pins for direct board mounting & provision for CJC sensor

Specifications**Specifications**

Product Code	XE-9200-001
General Description	Versatile, high quality circuit board mounting miniature socket
Thermocouple Type	R/S JIS
Connector Type	PCB socket
Connector Size	Miniature
Colour	Black
Max. Temperature	220°C
+Positive Contact	Copper
-Negative Contact	Copper Alloy
Standards Met	BS EN 50212:1997. RoHS