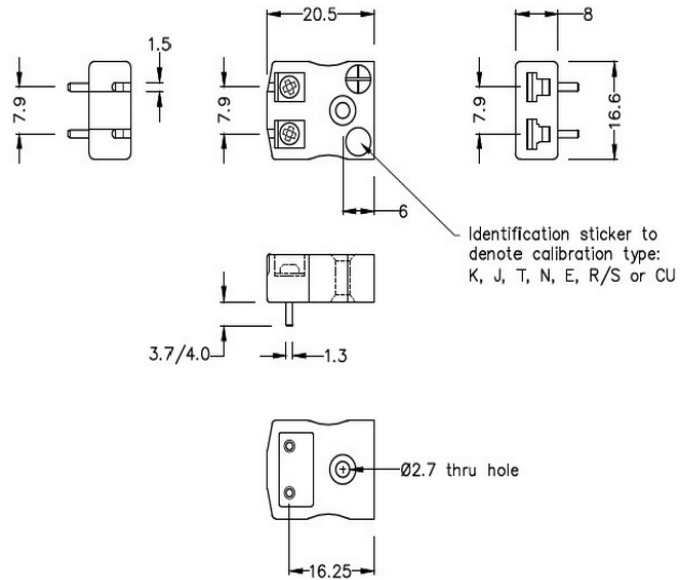


PCB Mounting Thermocouple Connector Socket JM-E-PCB Type E JIS



Miniature PCB Socket
(dimensions in mm)

General Description Versatile, high quality circuit board mounting miniature socket

Thermocouple Type E JIS

Connector Type PCB socket

Connector Size Miniature

Colour Violet

Max. Temperature 220°C

+Positive Contact Nickel Chromium

-Negative Contact Copper Nickel

Standards Met BS EN 50212:1997. RoHS

