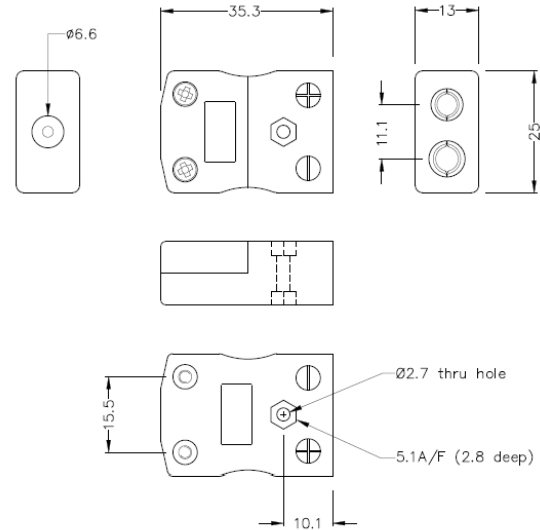


Standard Thermocouple Connector In-Line Socket JS-E-F Type E JIS



Standard in-line Socket
 (dimensions in mm)

General Description Accepts standard round plug pins, contacts are polarised to prevent incorrect connection.

Thermocouple Type E JIS

Connector Type Socket

Connector Size Standard

Colour Violet

Max. Temperature 220°C

+Positive Contact Nickel Chromium

-Negative Contact Copper Nickel

Standards Met BS EN 50212:1997. RoHS

